



THE HARTSINK TEAM



52 Curry Crescent
Georgetown



Guiding you home with confidence





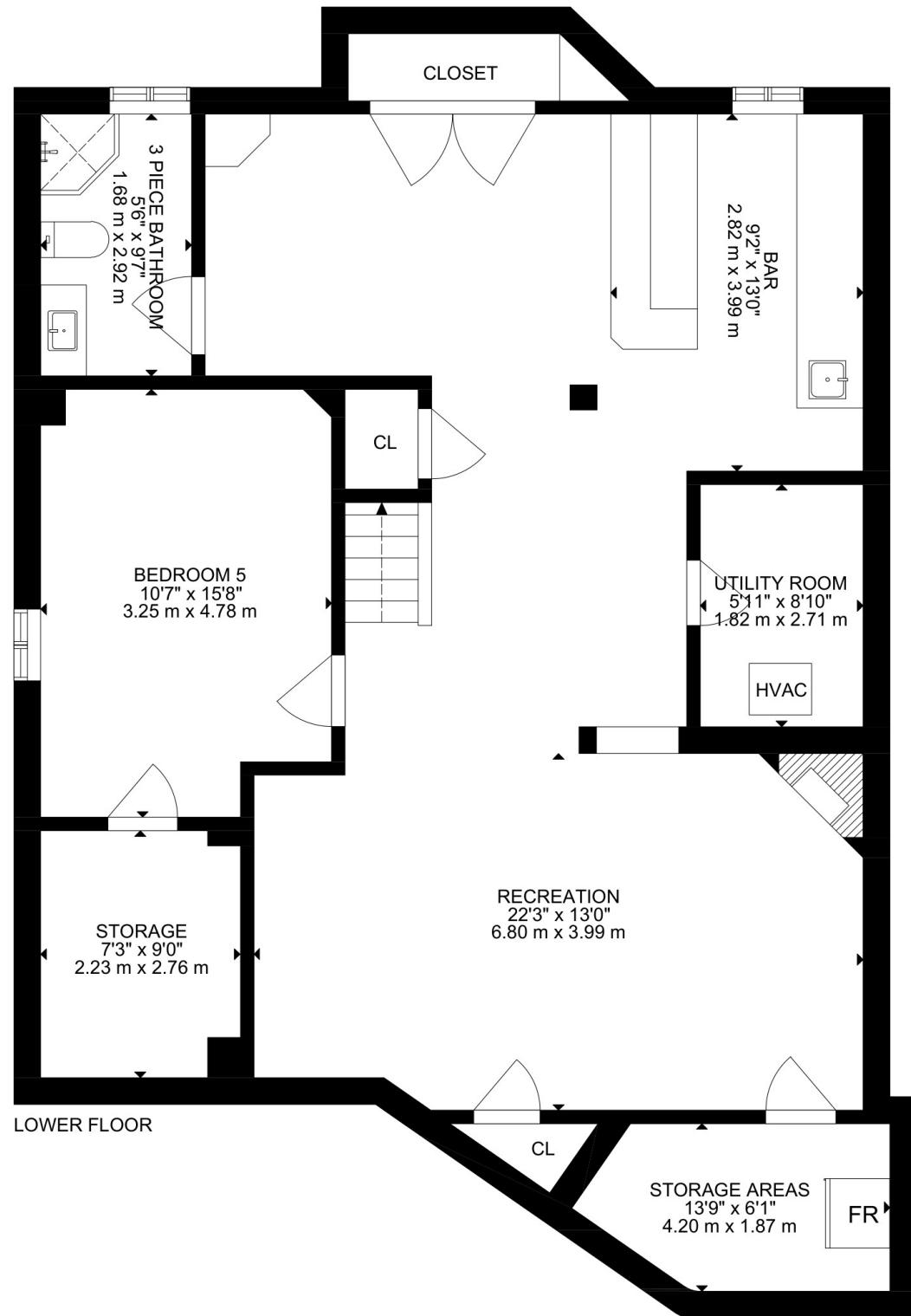


SCHOOLS

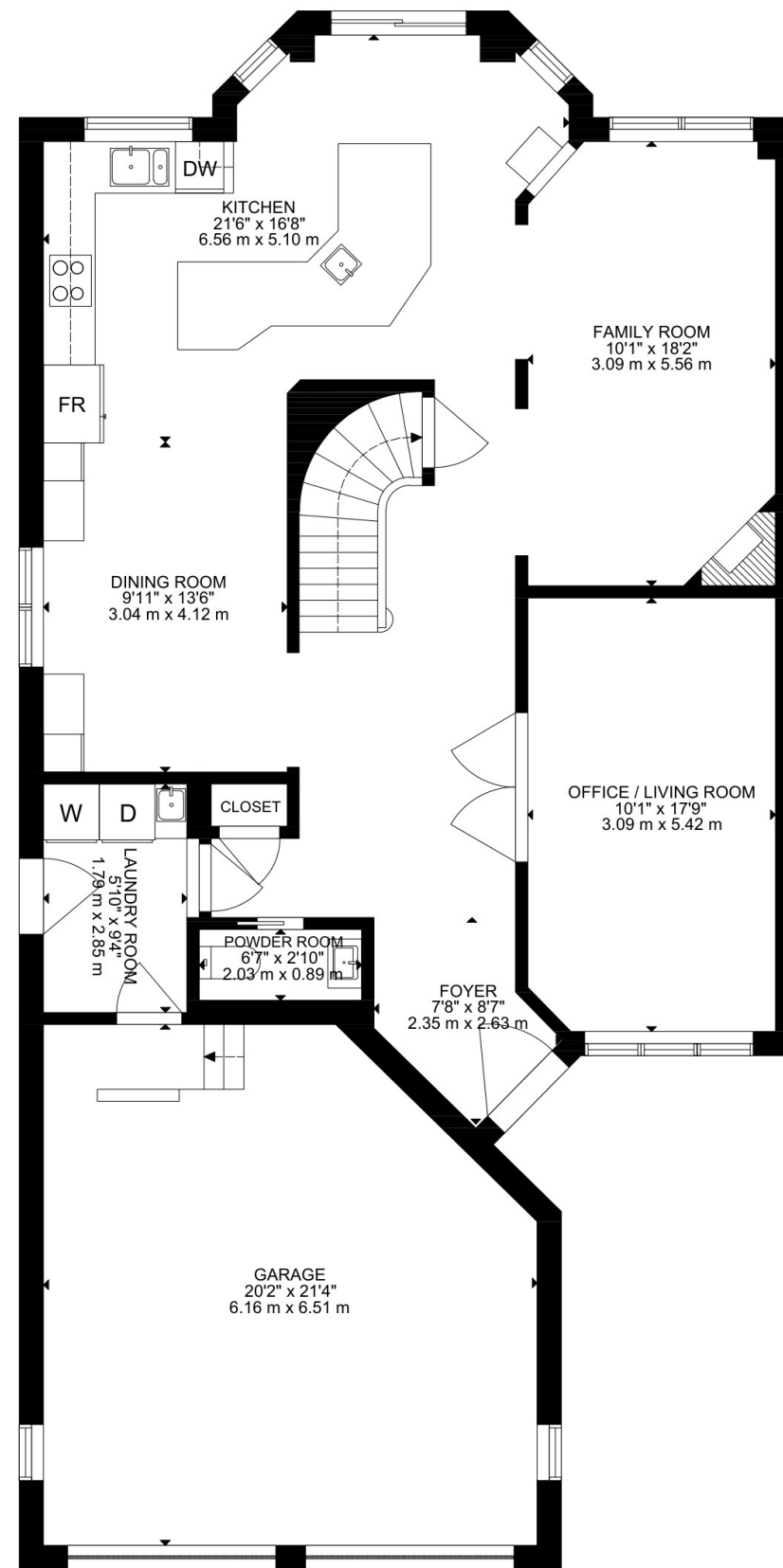
Halton District School Board		Halton Catholic District School Board	
ENGLISH			
JK- GR08	Silver Creek Public School	JK - GR08	St. Brigid CES
GR06 - GR08	Williams Parkway Sr.	GR09 - GR12	Christ The King CSS
GR09-GR12	Georgetown District High School		
FRENCH IMMERSION			
GR02 - GR05	George Kennedy Public School	GR01 - GR08	St. Catherine of Alexandria CES
GR06 - GR08	Centennial Middle School		
GR09 - GR12	Georgetown District High School		

School boundary information can be confirmed at:
<https://www.hdsb.ca/schools/find-local-school/>

FLOOR PLANS

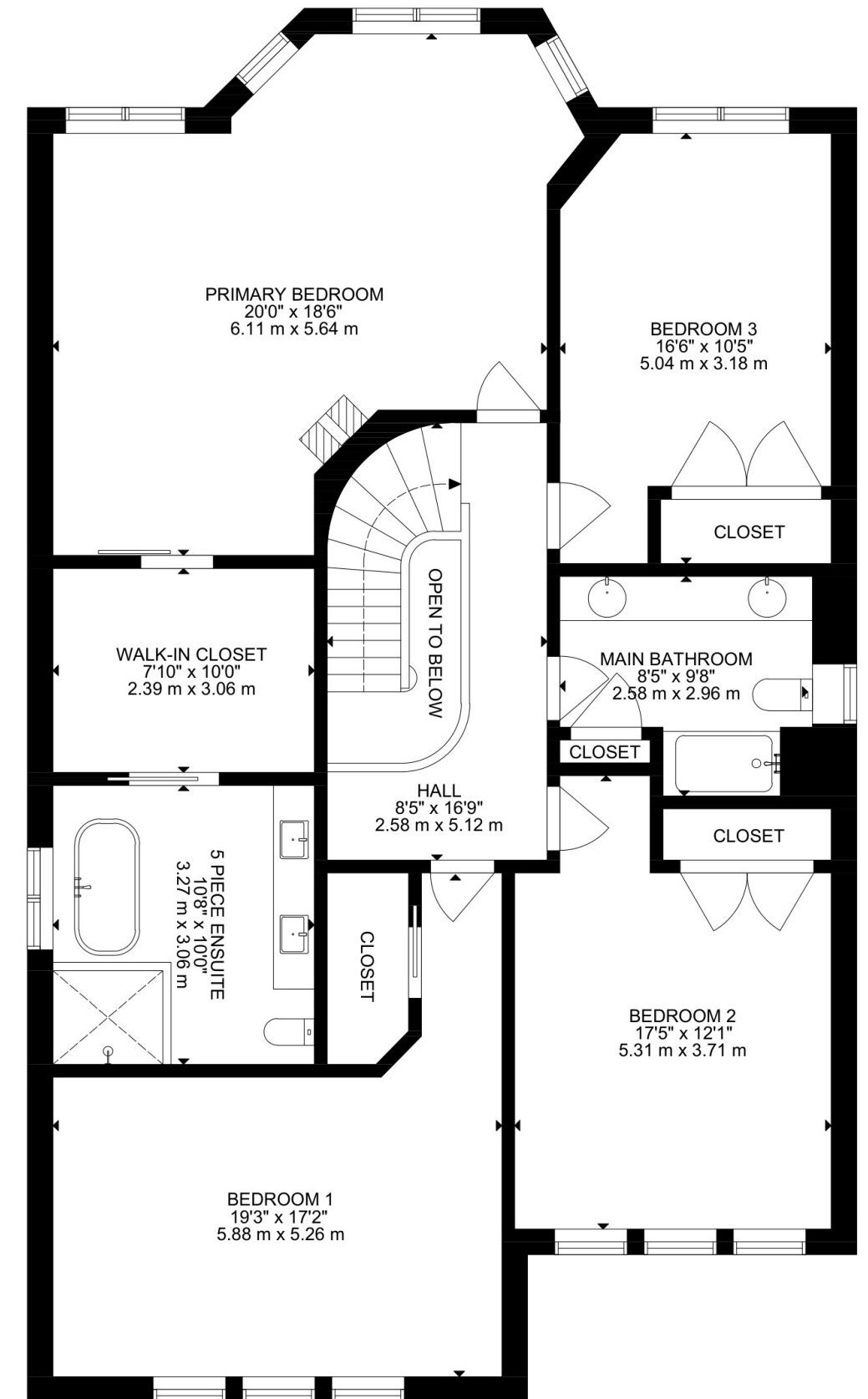


LOWER FLOOR



MAIN FLOOR

FLOOR PLANS



UPPER FLOOR

HOUSE FEATURES

EXTERIOR

FRONT EXTERIOR

- Patterned concrete driveway & walkways
- Asphalt driveway
- Front landscaping
- Covered front porch
- Double garage with openers & remotes
- Approx. 10 ft garage storage area
- Garage doors replaced (2012)
- Permanent soffit holiday lighting with app-controlled settings

BACKYARD

- Extensive patterned concrete hardscaping
- Backyard fence re-stained (2025)
- Inground saltwater pool
- Approx. 17 x 28 ft
- Shallow end approx. 4 ft / deep end approx. 8 ft
- Pool built in 2007
- Liner replaced in 2023
- Hayward pump & heater
- Pump sand filter replaced 2026
- Cabana/bar shed with electrical power & sit-up bar
- Gas BBQ hookup

INTERIOR MAIN LEVEL

FOYER

- Porcelain tile flooring
- Decorative front door with wrought iron glass insert (2016)
- Pot lights

POWDER ROOM

- Tile flooring
- Pocket door
- Vanity lighting
- Crown moulding
- Mosaic tile accent wall
- Updated 2-piece bathroom

LAUNDRY ROOM

- Tile flooring
- Cabinetry/storage
- Laundry sink
- Access to side yard
- Access to garage
- Whirlpool front-load washer & dryer

- Track lighting
- Main floor laundry

OFFICE / LIVING ROOM

- Engineered hardwood flooring
- Large bow window overlooking front yard
- Hunter Douglas blinds
- Pot lights
- Double French door entry

DINING ROOM

- Engineered hardwood flooring
- Built-in cabinetry & countertops
- Large window overlooking side yard
- Hunter Douglas blinds
- Pot lights
- Chandelier
- Nest thermostat

FAMILY ROOM

- Engineered hardwood flooring
- Large windows overlooking backyard
- Hunter Douglas blinds
- Pot lights
- Crown moulding
- Gas fireplace with stone surround
- Open concept to kitchen

KITCHEN (RENOVATED 2016)

- Engineered hardwood flooring
- Soft-close cabinetry
- Decorative glass cabinet inserts
- Pantry storage
- Spice drawer
- Olive/vinegar drawer
- Magic corner cupboard system
- Garbage/recycling drawer
- Wine/glass display cabinet
- Storage built into oversized island
- Granite countertops
- Prep sink in island
- Breakfast area
- Walkout to backyard through updated patio doors (2016)
- Hunter Douglas blinds
- Pot lights throughout
- Pendant lighting over island
- Under-cabinet lighting
- Interior cabinet lighting
- Open concept layout
- Oversized island with seating for approximately 6
- Sweepovac built-in vacuum system

- Stainless steel LG dishwasher
- Built-in Panasonic microwave
- Stainless steel GE Profile stove/oven
- Stainless steel Frigidaire Gallery fridge with water/ice dispenser
- Stainless steel range hood

UPPER LEVEL

HALLWAY

- Engineered hardwood flooring
- 2 flush mount light fixtures

PRIMARY BEDROOM

- Engineered hardwood flooring
- Barn door access to walk-in closet
- 4 large windows overlooking backyard
- California shutters
- Ceiling fan with light
- Pot lights
- Dimmable lighting
- Electric fireplace with built-in TV niche

WALK-IN CLOSET

- Engineered hardwood flooring
- California Closet system
- His & hers layout
- Built-in drawers, shelving, shoe racks & hanging compartments
- Hamper drawer & jewellery drawer
- Hidden ironing board
- Attic hatch access
- Pot lights
- Open concept access to ensuite

5-PIECE ENSUITE

- Heated porcelain tile flooring
- Custom vanity cabinetry with extensive storage
- Built-in vanity cabinet with drawers
- Double sink vanity with quartz countertop
- Frosted privacy window overlooking side yard
- Hunter Douglas blinds
- Large glass walk-in shower with rain head & accessory niche
- Freestanding soaker tub
- Pot lights
- Vanity lighting
- Pocket door entry

4 PIECE FAMILY BATHROOM

BEDROOM 2

- Engineered hardwood flooring
- Large closet with pocket door and built-in shelving
- 3 large windows overlooking front yard
- Hunter Douglas built-in blinds
- Ceiling fan with light

BEDROOM 3

- Engineered hardwood flooring
- Double-door closet with built-in organizer
- 3 windows overlooking front yard
- Ceiling fan with light

5-PIECE BATHROOM

- Tile flooring
- Toiletry/linen closet
- Double sink vanity
- Window overlooking side yard
- Hunter Douglas built-in blinds
- Shower/tub combination with tile surround
- Updated toilet
- Vanity lighting
- Painted cabinetry
- Updated 5-piece bathroom

BEDROOM 4

- Engineered hardwood flooring
- Large double-door closet
- Window overlooking backyard
- Ceiling fan with light
- Wallpaper accent wall

LOWER LEVEL

RECREATION/ENTERTAINMENT AREA

- Hand-scraped laminate flooring
- Built-in shelving
- Cold cellar access
- Large storage room access
- Pot lights
- Gas fireplace with stone surround

BASEMENT BAR (COMPLETED BY THE BAR STORE)

- Laminate flooring
- Cabinetry & drawers
- Glass cabinetry with interior lighting
- Built-in beverage cooler

HOUSE FEATURES

- Built-in wine fridge (wine fridge excluded)
- Large wood bar countertop
- Textured secondary countertop finishes
- Sit-up bar seating for approximately 5

GYM/BEDROOM 5/CRAFT ROOM

- Laminate flooring
- Closet with workshop/storage area
- Pot lights

3-PIECE BATHROOM

- Tile flooring
- Window overlooking side yard
- Glass stand-up shower with tile surround
- Vanity lighting
- Updated

STORAGE AREAS

- Large finished storage room with double doors
- Built-in shelving
- Storage under stairs
- Cold room under porch

UTILITY ROOM

- Carrier furnace (2011)
- Carrier A/C (2011)
- Rinnai Tankless water heater (Reliance rental)
- Water softener
- Humidifier
- General Aire humidifier
- Furnace & A/C serviced twice yearly through Asbuilt Comfort Care



ADDITIONAL FEATURES:

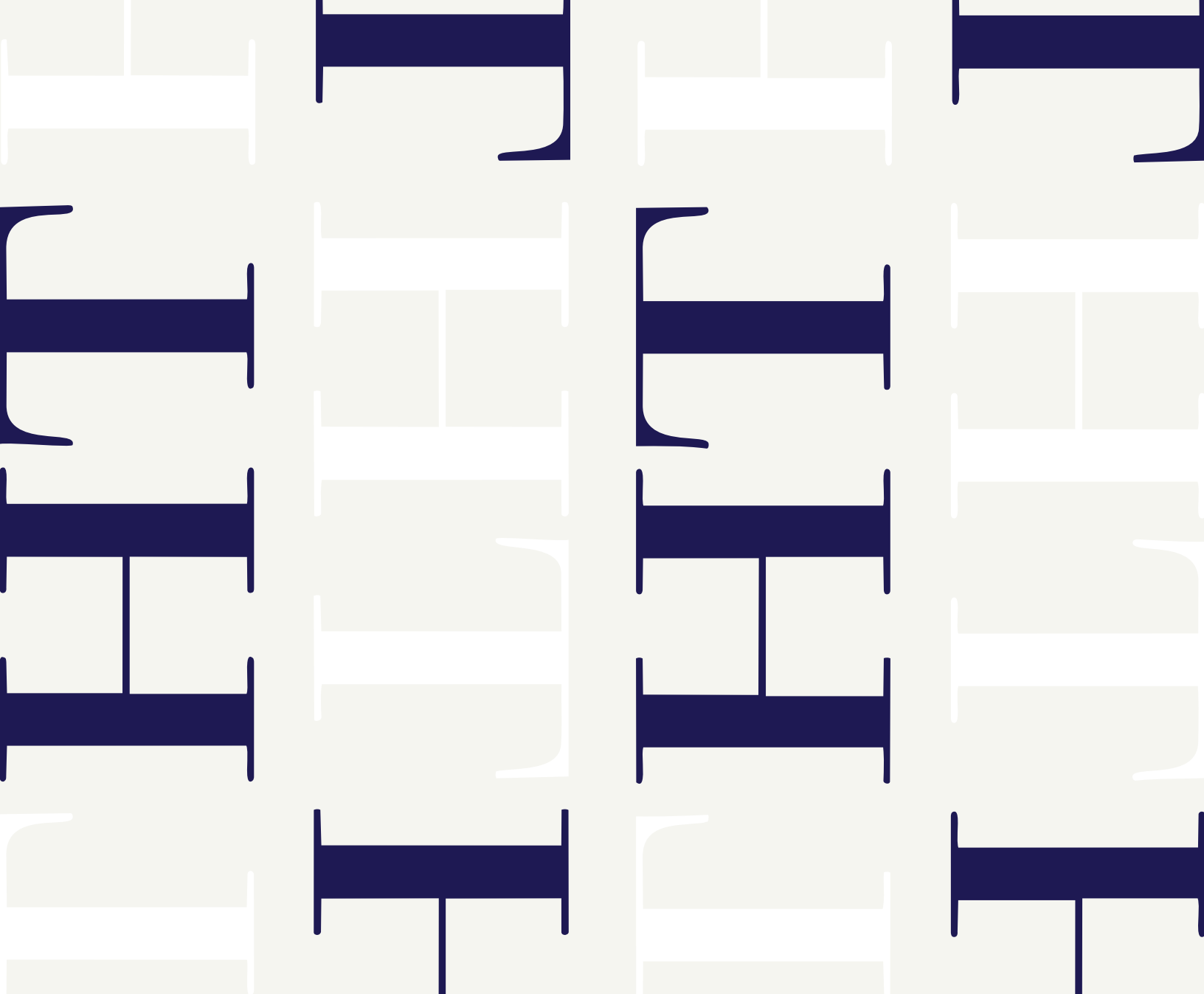
- Main floor renovation completed with permits (2016)
- Smooth ceilings throughout main floor
- Staircase & railings refinished
- Engineered hardwood flooring throughout
- Hunter Douglas custom blinds throughout
- All windows replaced (~2023/2025)
- Soffits & eavestroughs replaced (~2023/2025)
- Attic re-insulated (~2021/2023)
- Roof replaced (~2010/2011)
- Ring camera system included
- Central vacuum with 2 CVAC units
- Carrier Furnace & A/C owned (2011)
- Furnace & A/C serviced twice yearly through Asbuilt Comfort Care
- Rinnai Tankless water heater (Reliance rental)
- Water softener
- Humidifier
- General Aire humidifier
- Permanent exterior holiday lighting installed by Nova Lights



THE HARTSINK
TEAM

Note: The information contained herein has been provided by the home owner and is to be verified by the Buyer.

Note: The information contained herein has been provided by the home owner and is to be verified by the Buyer.



THE HARTSINK TEAM



info@lisahartsink.com