



THE HARTSINK TEAM

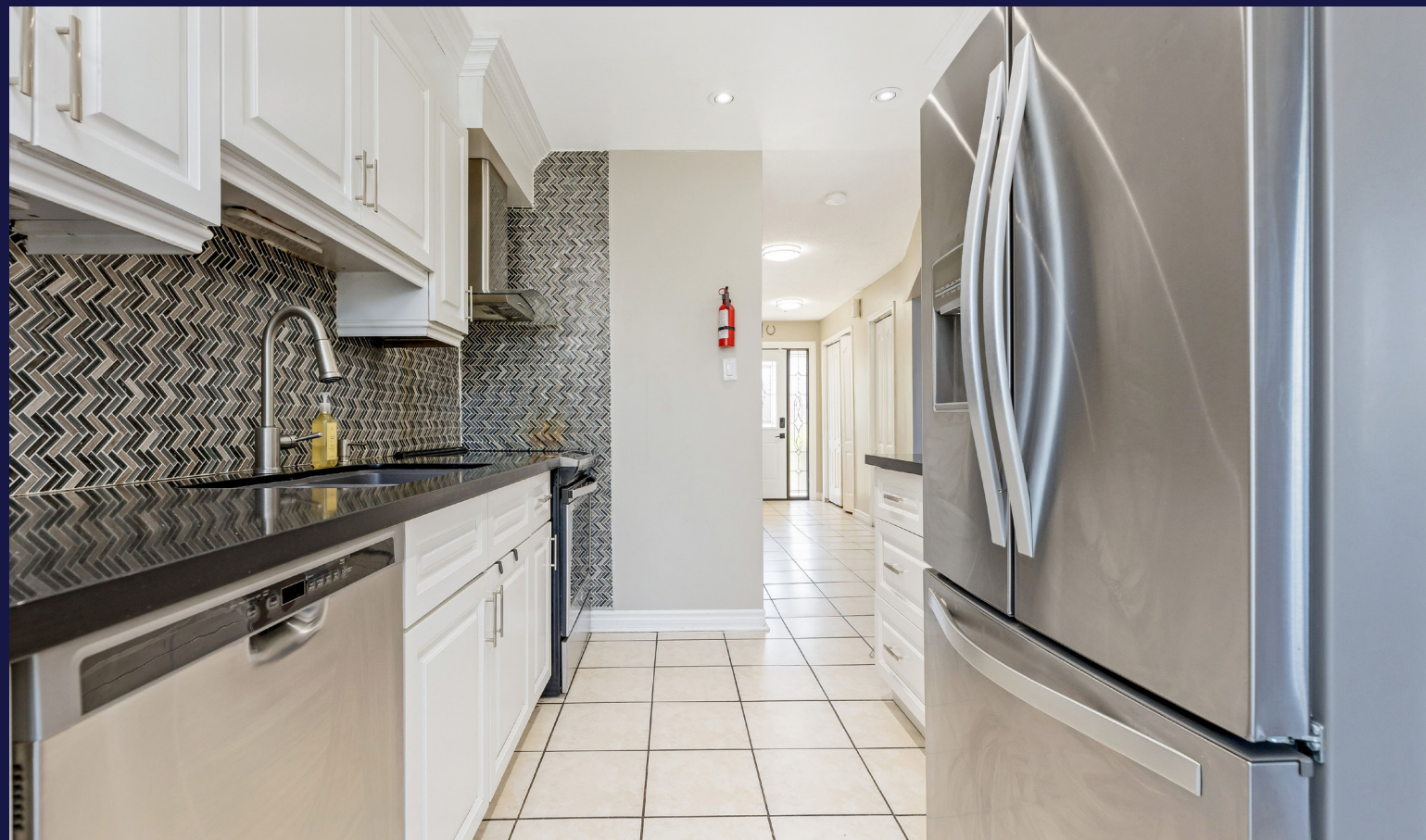


51 Acadian Heights
Brampton



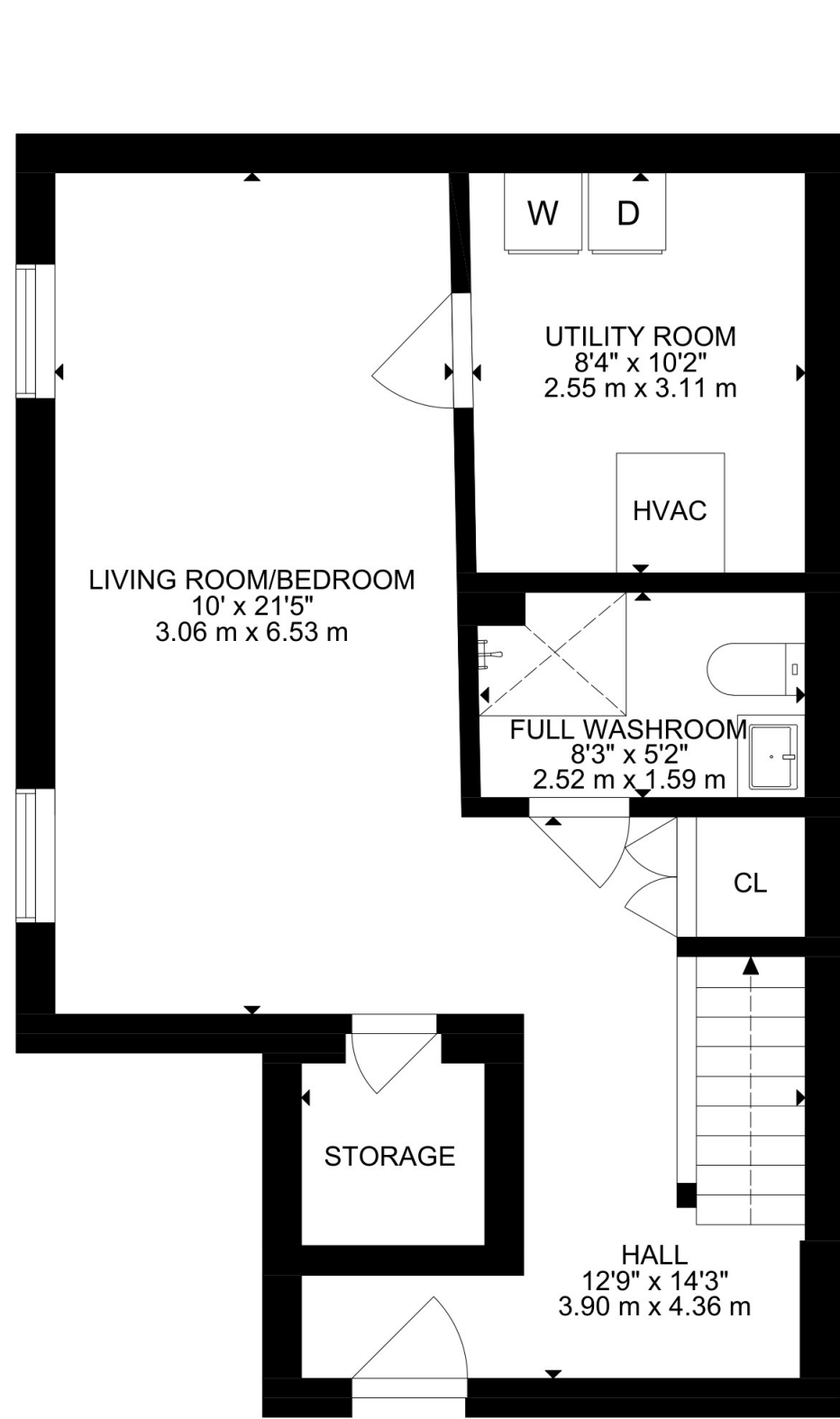
Guiding you home with confidence





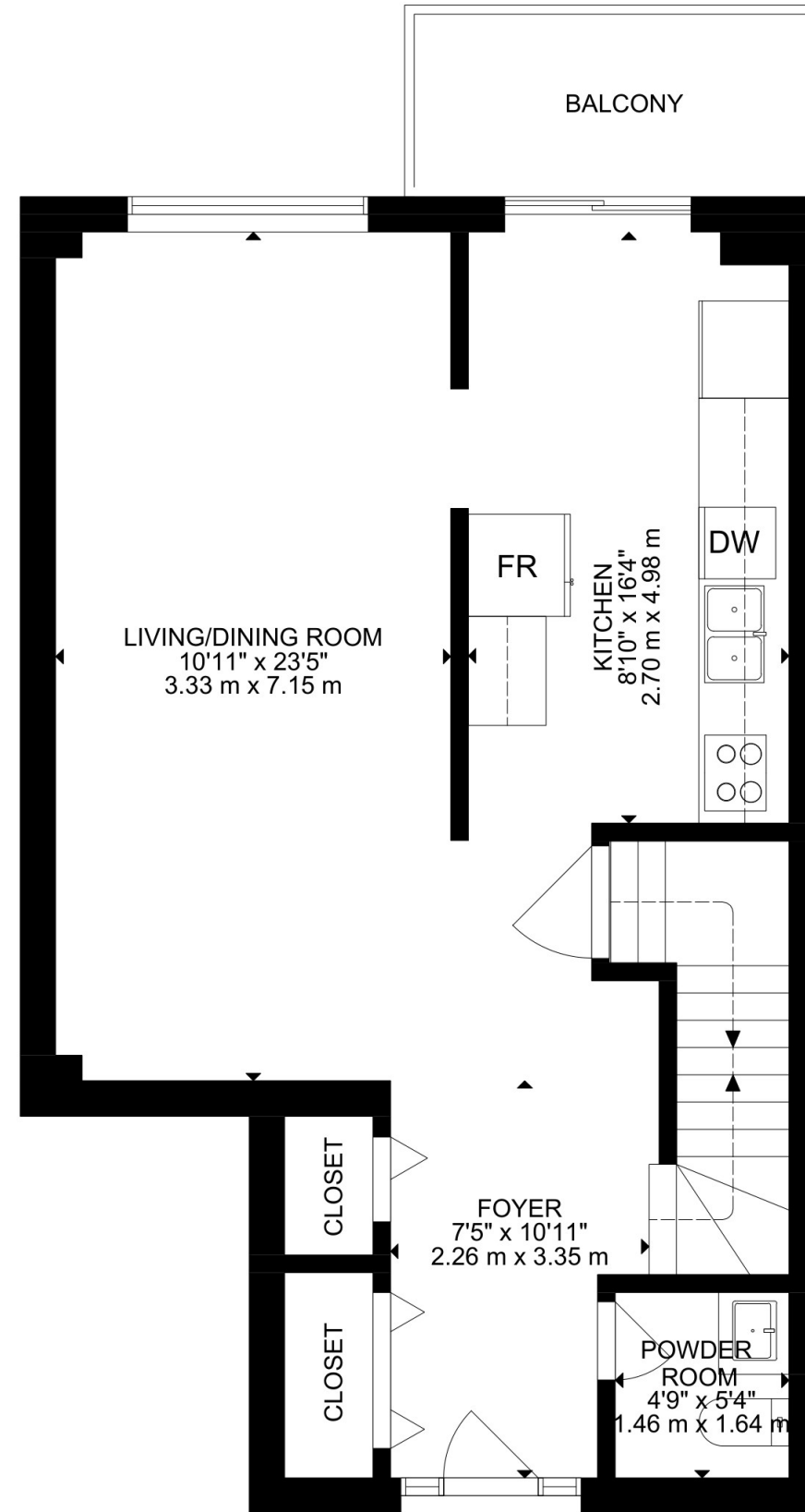


FLOOR PLANS

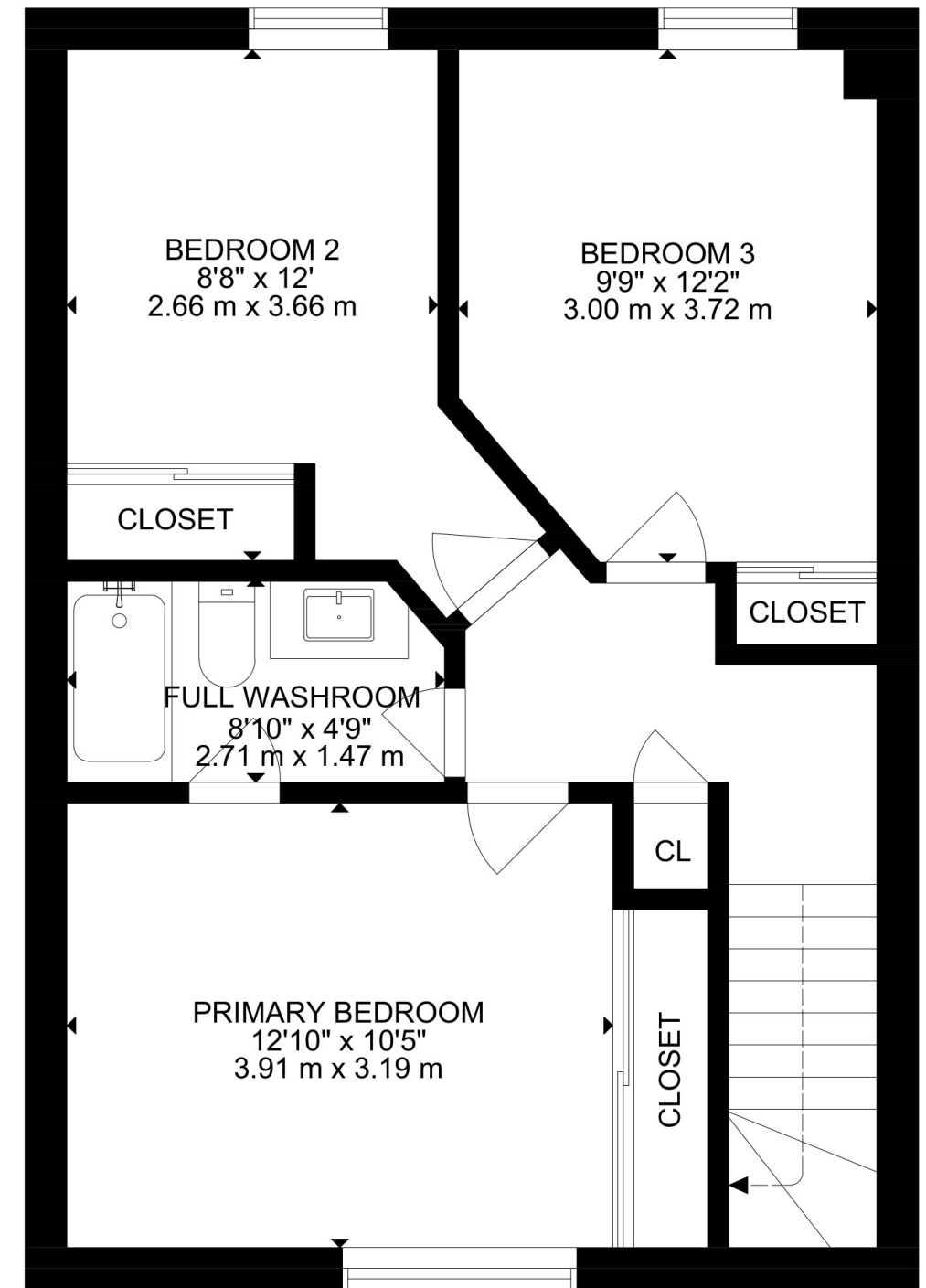


LOWER FLOOR

FLOOR PLANS



MAIN FLOOR



UPPER FLOOR

HOUSE FEATURES

EXTERIOR

FRONT YARD

- Brick and aluminum siding
- Covered front porch
- Paved single driveway
- 2 car parking

GARAGE

- 1 car garage, automatic doors

BACKYARD

- Fully fenced
- Interlock patio
- Gazebo

INTERIOR

MAIN LEVEL

FRONT ENTRANCE

- Ceramic tile flooring
- Single door entry with decorative glass insert & side lite
- Semi flush mount light
- Double closet & single closet

HALLWAY

- Ceramic tile flooring
- Semi flush mount light

LIVING ROOM

- Broadloom flooring
- Two large windows overlooking front yard
- Open to dining room

LIVING ROOM

- Hardwood flooring
- Large window overlooking backyard
- Potlights

2 PIECE POWDER ROOM

- Tile flooring
- Single vanity
- Vanity lights
- One window overlooking front yard

KITCHEN

- Ceramic tile flooring
- Potlights
- Whirlpool stainless steel stove
- Stainless steel & glass range hood
- Whirlpool stainless steel dishwasher
- Shaker style cabinets with silver hardware

- Glass sliding doors walk out to raised deck and backyard

Note: The information contained herein has been provided by the home owner and is to be verified by the Buyer.

UPPER LEVEL

HALLWAY

- Laminate flooring
- Semi flush mount light
- Linen closet

PRIMARY BEDROOM

- Laminate flooring
- Oversized window overlooking front yard
- Oversized closet with sliding doors
- Ensuite privilege to family bath

2ND BEDROOM

- Laminate flooring
- One window overlooking front yard
- Ceiling fan with light
- Double closet with sliding doors

3RD BEDROOM

- Laminate flooring
- One window overlooking backyard
- Double closet with sliding doors

4 PIECE FAMILY BATHROOM

- Tile flooring
- Tub/shower combo
- Built in single vanity y
- Directional track lighting

LOWER LEVEL

RECREATION ROOM

- Broadloom flooring
- Two windows facing side
- Three upgraded semi flush mount lights

LAUNDRY AREA

- Combined with furnace room
- Whirlpool top load washer (white)
- Whirlpool top load dryer (white)

3 PIECE BATHROOM

- Walk-in shower with glass enclosure and tile surround
- Built in single vanity
- Vanity lights
- Potlights

COLD ROOM

- Oversized
- Built-in shelving
- Electrical panel

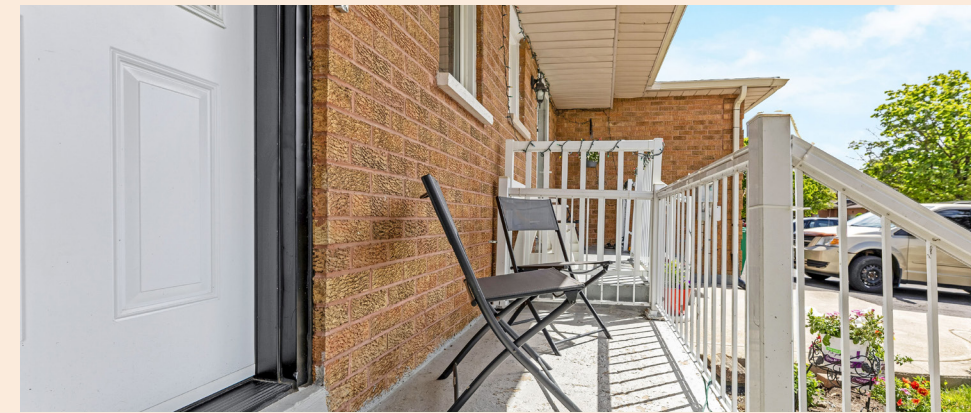
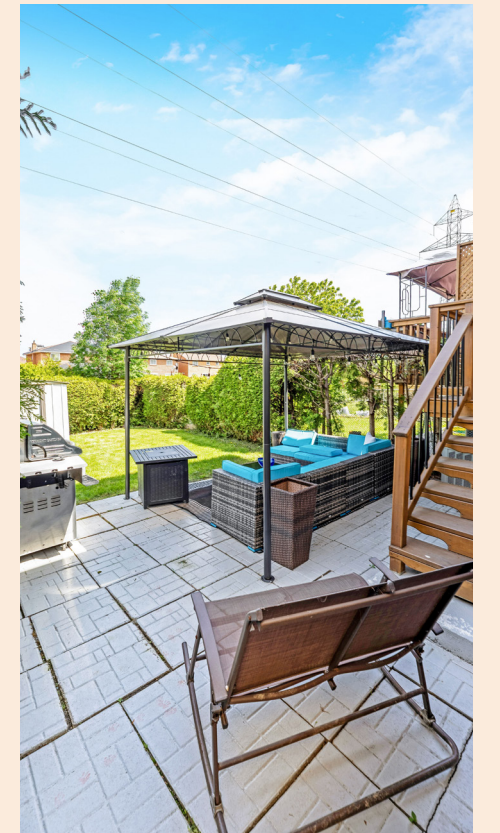


**THE HARTSINK
TEAM**

HOUSE FEATURES

ADDITIONAL FEATURES:

- Heating: American Standard gas furnace
- Cooling: American Standard AC
- GSW Hot Water Tank (Reliance rental)
- Ontario Consumers Water Softener
- Electrical Panel: 100 Amps
- Roof: Asphalt shingle

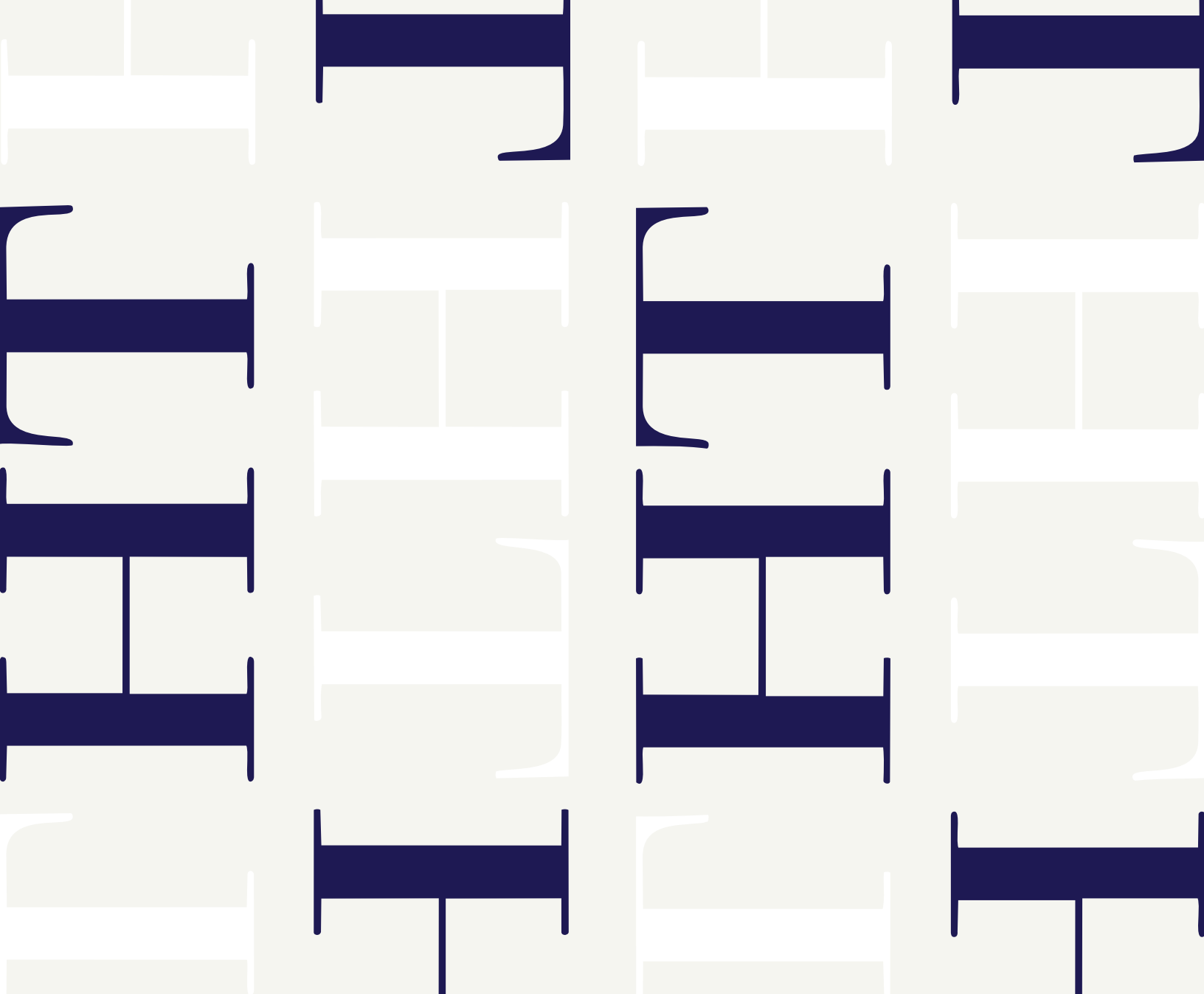


Note: The information contained herein has been provided by the home owner and is to be verified by the Buyer.

SCHOOLS

Peel District School Board		Peel Catholic District School Board	
ENGLISH			
JK- GR05	Hickory Wood Public School	JK - GR08	Pauline Vanier CES
GR06 - GR08	Fletcher's Creek Sr.	GR09 - GR12	St. Augustine Catholic SS
GR09-GR12	Brampton Centennial SS		
FRENCH IMMERSION			
GR01 - GR05	Copeland PS	GR01 - GR08	Pauline Vanier CES
GR06 - GR08	Fletcher's Creek Sr.	GR09 - GR12	Cardinal Leger SS

School boundary information can be confirmed at:
<https://www.peelschools.org/school-finder>



THE HARTSINK TEAM



info@lisahartsink.com