



THE HARTSINK TEAM



39 McGilvray Crescent
Georgetown



Guiding you home with confidence

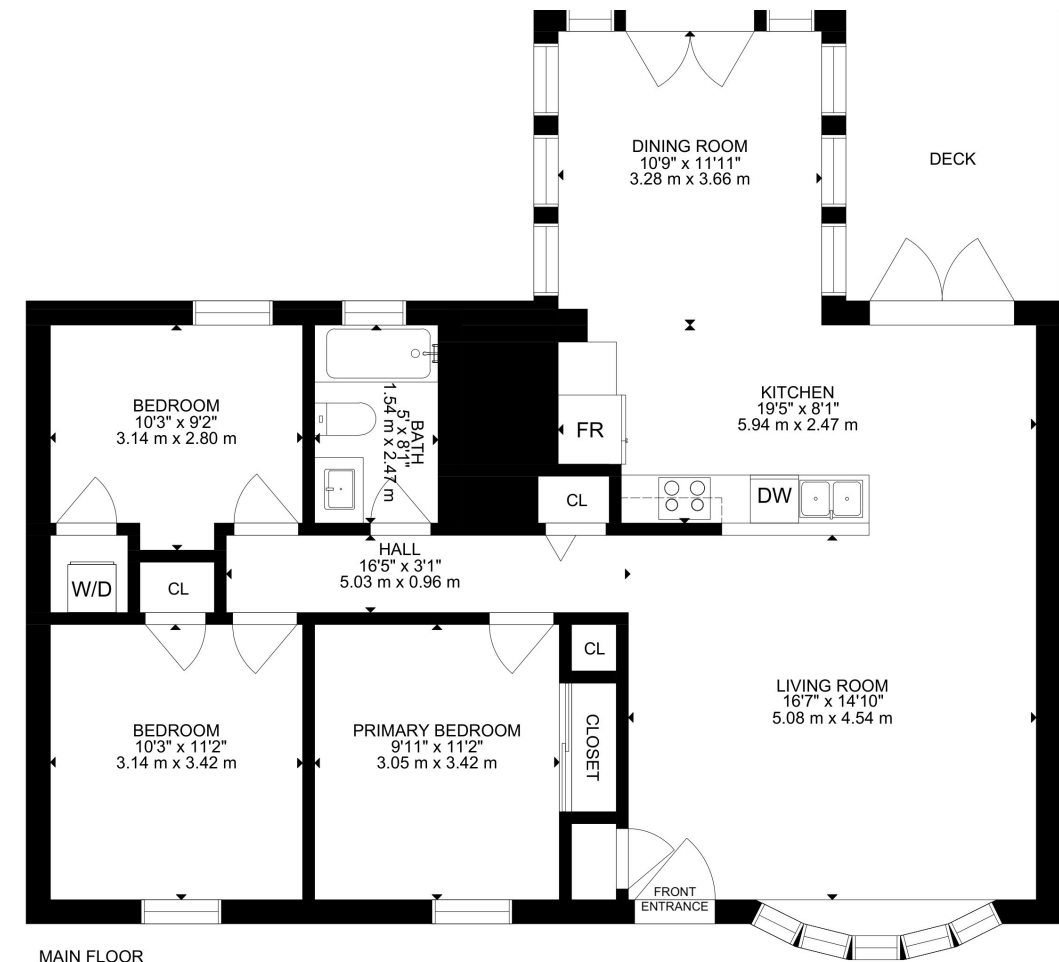
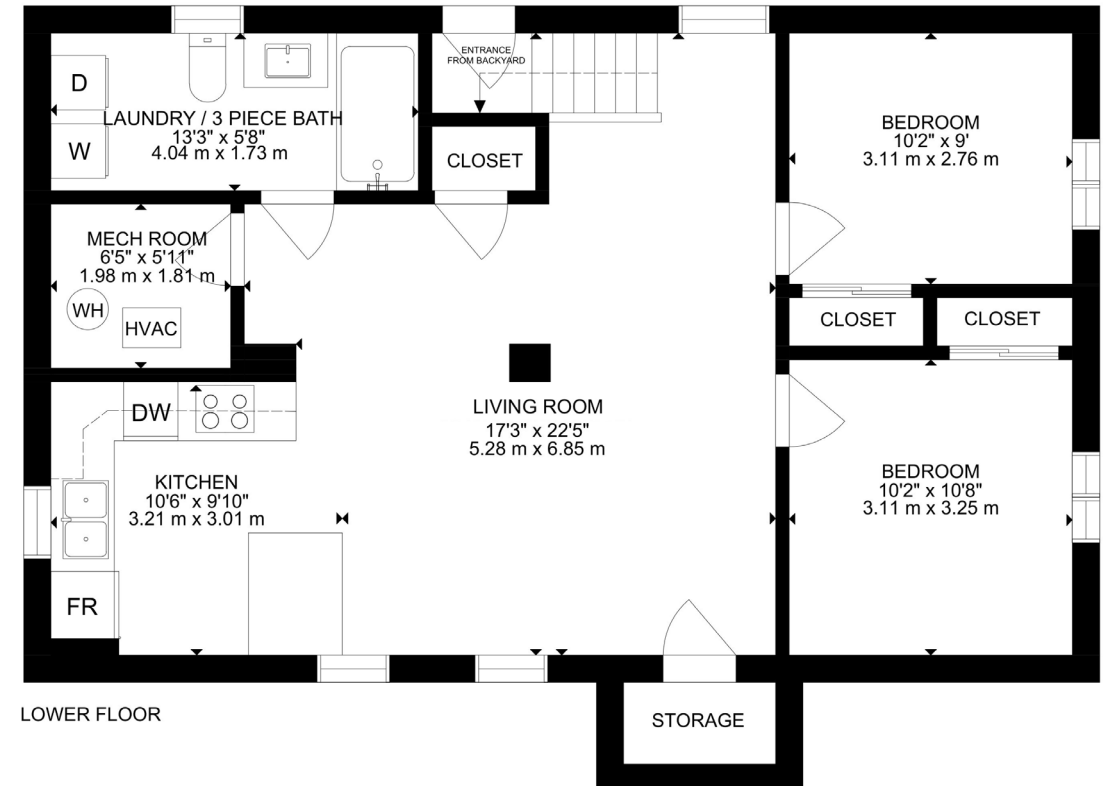








FLOOR PLANS



HOUSE FEATURES

EXTERIOR

FRONT YARD

- Asphalt driveway, double wide at front & single wide towards rear with 4 car parking

BACK YARD

- Deck
- Shed
- Fenced garden

INTERIOR

MAIN LEVEL

FRONT ENTRANCE

- Single door with glass insert
- Hardwood flooring
- Semi flush mount light

LIVING ROOM

- Hardwood flooring
- 1 bay window overlooking front yard with seating bench
- Open to kitchen and breakfast area

KITCHEN

- Laminate flooring
- Pot lights & directional lights
- Frigidaire stainless steel stove
- GE Stainless steel double door fridge
- Whirlpool stainless steel dishwasher
- Frigidaire stainless steel fridge
- Half wall feature between kitchen & living

DINING ROOM

- Laminate flooring
- 7 windows & double door leading to backyard

BREAKFAST AREA

- Laminate flooring
- Glass sliding doors to back deck & yard
- Potlights

HALLWAY

- Hardwood flooring
- Linen closet
- Additional storage closet

PRIMARY BEDROOM

- Hardwood flooring
- 1 window overlooking front yard

- Semi flush mount light
- Double closet

2ND BEDROOM

- Hardwood flooring
- 1 window overlooking front yard
- Semi flush mount light
- Single closet

3RD BEDROOM

- Hardwood flooring
- 1 window overlooking back yard
- Semi flush mount light
- GE Front load washer
- GE Front load dryer

3 PIECE FAMILY BATHROOM

- Tile flooring
- Tub shower combo with tile surround & handheld
- Upgraded shower fixtures (rain head & handheld)
- Updated built in vanity
- Vanity lights
- 1 window overlooking back yard

LOWER LEVEL

(SEPARATE ENTRANCE FROM BACK YARD)

LIVING ROOM

- Laminate flooring
- 2 windows facing front yard
- Pot lights

KITCHEN

- Laminate flooring
- Potlights
- 1 window facing side yard
- Granite countertop
- Granite kitchen island - seats 4
- Frigidaire stainless steel stove
- GE stainless steel double door fridge
- Whirlpool stainless steel dishwasher
- GE stainless steel fridge with freezer drawer
- Vesta stainless steel range hood

1ST BEDROOM

- Laminate flooring
- 1 window facing side yard
- Semi flush mount light
- Double closet
- Electrical panel

2ND BEDROOM

- Laminate flooring
- 1 window facing side yard
- Semi flush mount light
- Double closet with mirror sliding doors

LAUNDRY/3 PIECE

BATHROOM

- Tile flooring
- Tub shower combo with tile surround & niche
- Upgraded shower fixtures
- Updated built in vanity with LED mirror light
- Potlights
- 1 window facing backyard
- Samsung front load washer
- Electrolux front load dryer
- Storage cabinets above washer/dryer

ADDITIONAL FEATURES:

- Heating: KeepRite gas furnace, Owned (2019)
- Central Cooling: High efficiency Carrier AC, Owned
- HWT Rheem: Reliance rental, brand new, \$19.20/month
- Water Softener: Whirlpool, Owned
- Electrical Panel: 200 Amps
- Roof: Asphalt Shingle



Note: The information contained herein has been provided by the home owner and is to be verified by the Buyer.

HOUSE FEATURES



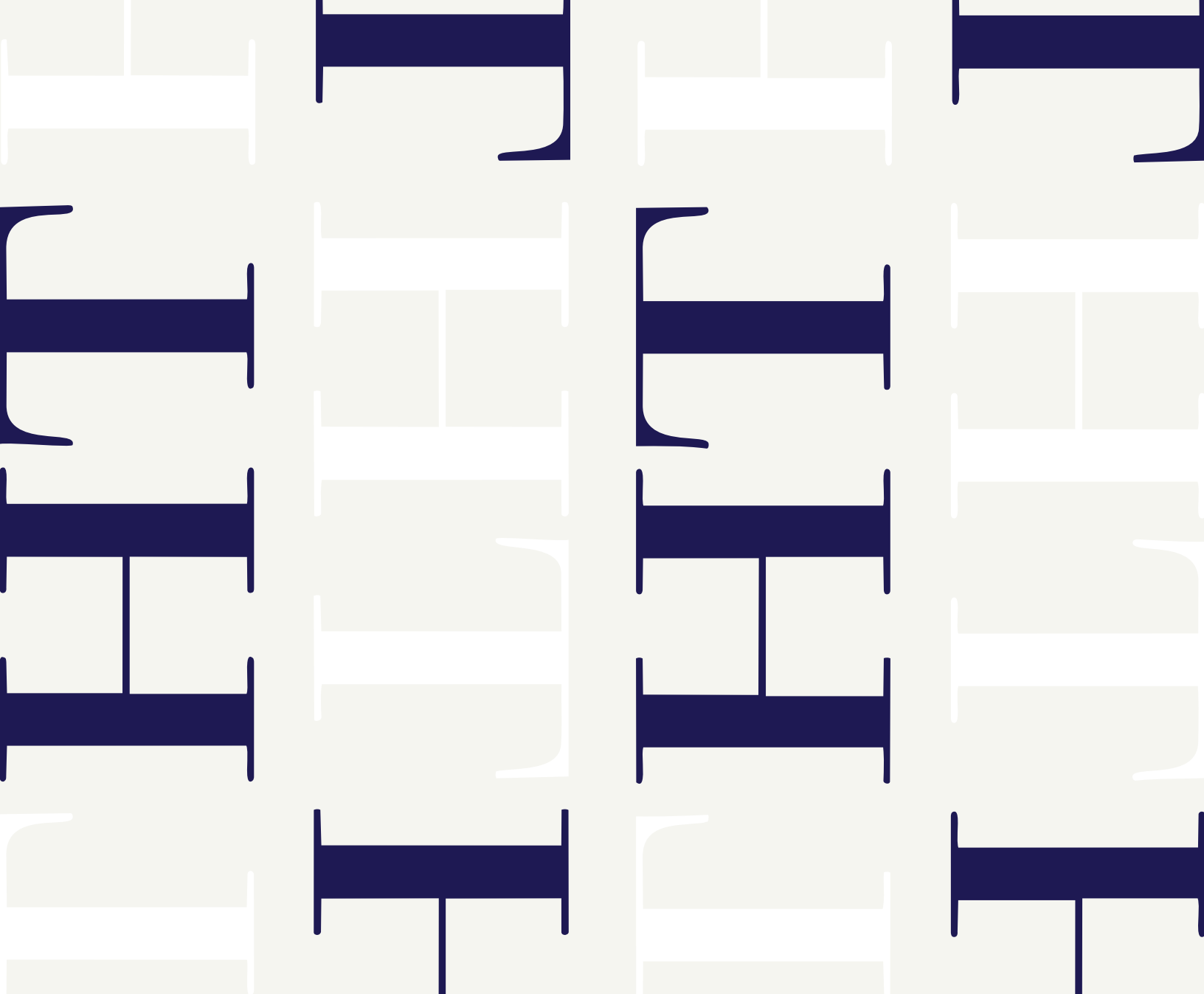
Note: The information contained herein has been provided by the home owner and is to be verified by the Buyer.

SCHOOLS

Halton District School Board		Halton Catholic District School Board	
ENGLISH			
JK- GR05	Harrison Public School	JK - GR08	St. Francis of Assisi CES
GR06 - GR08	Centennial Public School	GR09 - GR12	Christ the King CSS
GR09-GR12	Georgetown District HS		
FRENCH IMMERSION			
GR02 - GR05	Harrison Public School	JK - GR06	ÉÉC du Sacré Coeur
GR06 - GR08	Centennial Public School	GR07 - GR12	ÉSC Sainte Famille
GR09 - GR12	Georgetown District HS		

School boundary information can be confirmed at:

<https://www.hdsb.ca/schools/Pages/Find-My-Local-School.aspx> & <https://schoolplanning.hcdsb.org/find-your-school/>



THE HARTSINK TEAM



info@lisahartsink.com